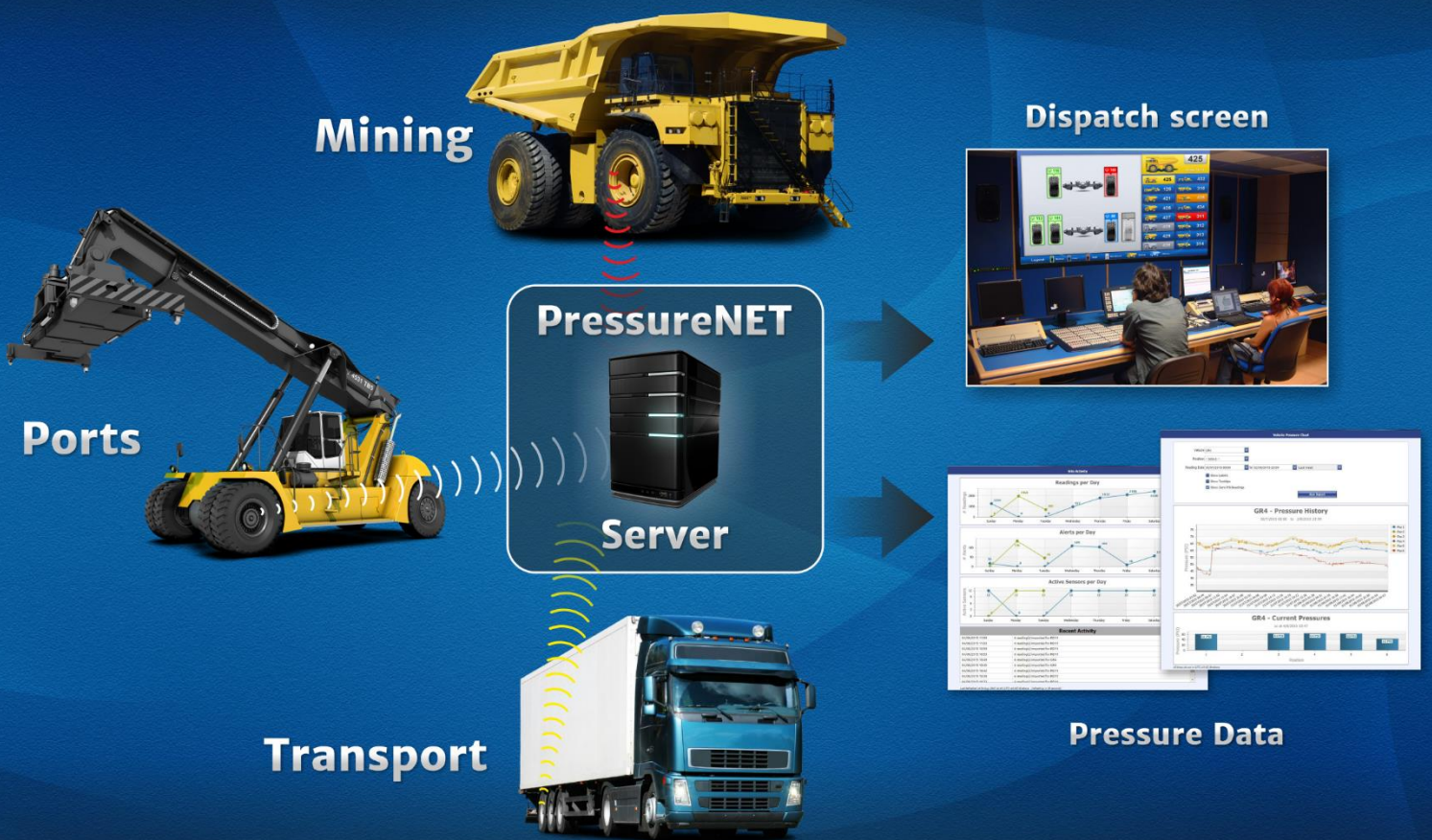


# enTIRE PressureNET

Tyre Pressure Monitoring System  
(TPMS) Software



Reduce tyre costs, vehicle downtime  
and improve safety

## What is enTIRE PressureNET?

**enTIRE PressureNET** is an INDEPENDENT tyre pressure monitoring system software interface which is designed to connect into any TPMS sensor. The system will display pressure, temperature, tread (if available) and GPS location.

Readings are sent back to the server and stored within **enTIRE PressureNET** which will then send alerts if the pressure or temperature exceeds set parameters.

The need for manual pressure checks is eliminated in addition to costly vehicle downtime required to complete them.

## What are the benefits of TPMS?

### Independence, Sensor Choices Available

While there are some other TPMS providers available, **enTIRE PressureNet** holds the distinction of supporting multiple sensor types giving you the option of selecting the most appropriate available sensor for each fleet type, all accessible through one convenient common interface.

### Fuel Savings

Operating a vehicle on incorrect tyre pressure can increase fuel consumption by an **average of 3.5%**. Fuel is the number one operational cost and avoiding pressure issues can translate to considerable cost savings across a fleet.

### Increased Tyre Life

With correct tyre pressure management you can **improve your tyre life by around 4%**. Driving on underinflated tyres reduces lifespan, making it necessary to replace them earlier.

### Reduced Down Time

Proactive tyre maintenance helps reduce costly vehicle down time.

### Increased Safety

**enTIRE PressureNet** can reduce or even eliminate the majority of your manual pressure checks, increasing staff safety. Tyre conditions, such as high or low pressures and temperatures, can be detected early, preventing blow outs from causing accidents.

### Time Savings

**enTIRE PressureNet** can reduce or even eliminate the majority of your manual pressure checks.

## What are the features of enTIRE PressureNet?

### Multiple Sensor Type Support

**enTIRE PressureNet** supports multiple sensor types giving you the option of selecting the most appropriate available sensor for each fleet type, all accessible through one convenient common interface.

### Simple to Install

**enTIRE PressureNet** is easy to implement as it is a Web based application. Once setup, you simply need to log into the Web site to view your fleet of vehicles and all tyre pressures.

### Email and Alerts

Alerts are sent to you as soon as out of range data is received by our server. The alert contains the information necessary to allow you to take immediate corrective action. Alerts are email and SMS based.

### Regular Summary Emails

You will receive a regular summary email at a frequency that you choose, advising you of the status of your fleet at that point in time, including a summary of issues.

### Tyre Pressure, Temperature and GPS location tracking

Along with pressure and temperature, the system can also track location via GPS, depending on your choice of telematics provider.

Backed by a support team with over 65 years combined experience

**enTIRE PressureNet** is supported by the same team that develops the system, giving you access to the best people suited to resolving any possible issues.

Connects into the award winning enTIRE Tyre & Rim Management System

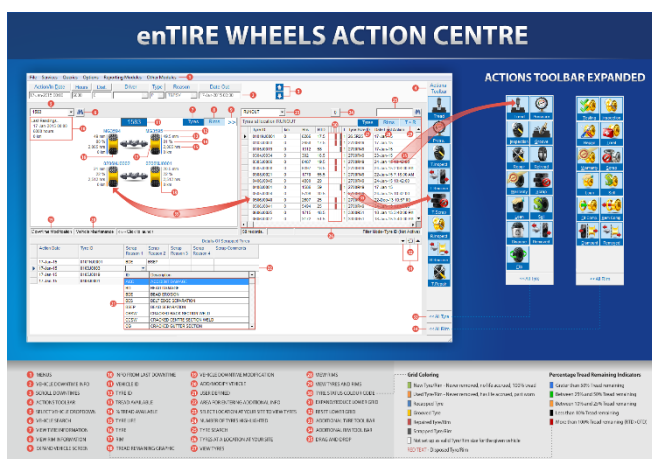
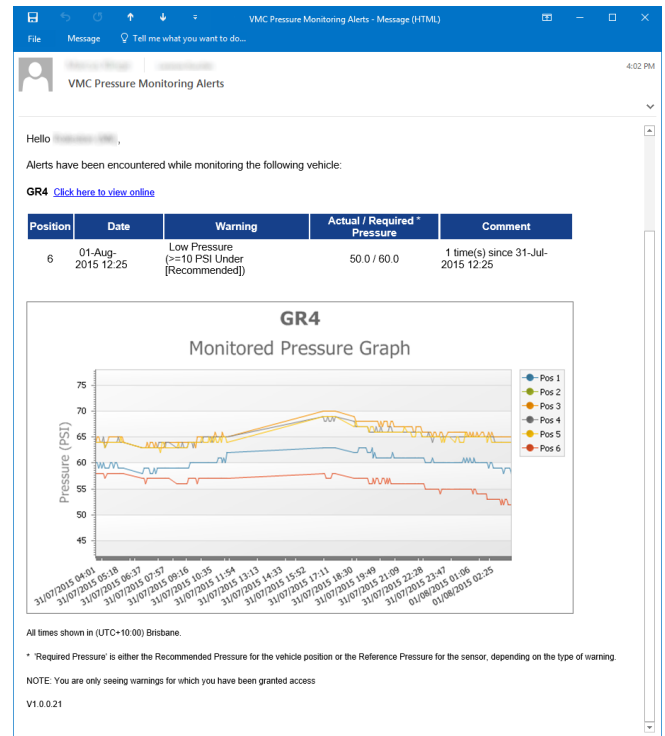
**enTIRE Wheels** is a full tyre and rim management system, which will assist you in reducing your tyre costs and improve rim safety. **enTIRE Wheels** is used throughout the world in mining and transport operations tracking over a billion dollars of tyres each year. Tyre pressures and temperatures are only one aspect of a tyre tracked with enTIRE Wheels.

**enTIRE PressureNet** can be used independently OR it can connect into our tyre and rim management product enTIRE Wheels. With this connection, tyre pressures and temperatures can be stored against each individual tyre's history. Alarms and alerts can be automatically be accessed via enTIRE Wheels.

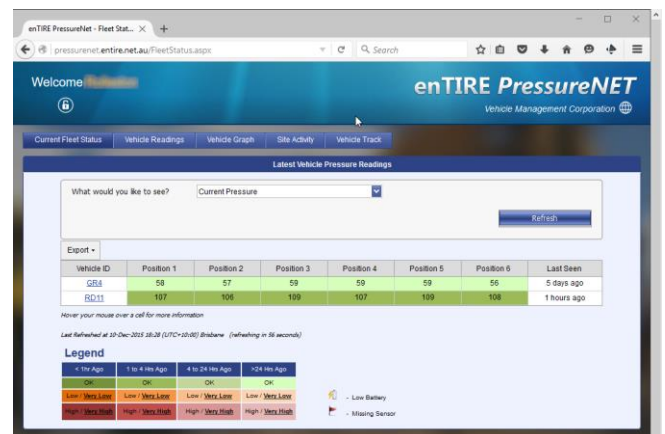
## enTIRE PressureNET screen examples

Configure pressure/temperature SMS or e-mail alerts

You can configure the types of alerts received for each user of the system.

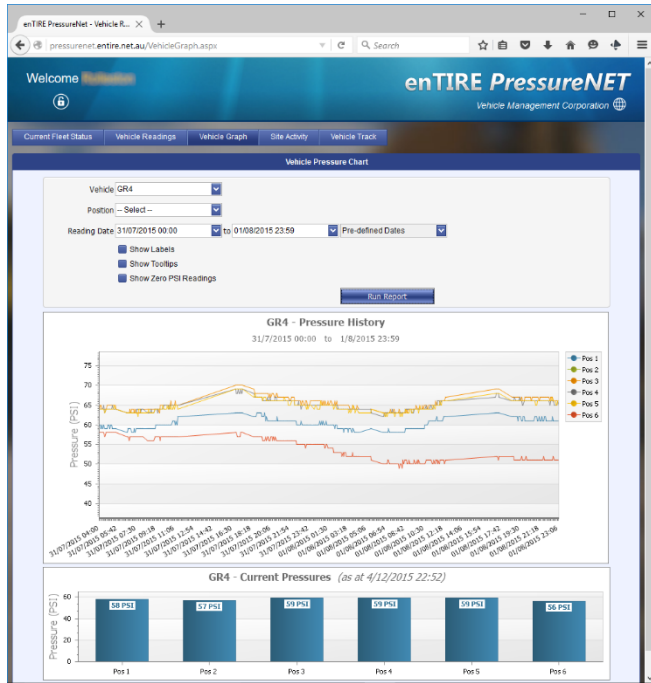


Colour coded view of all your fleet tyre pressures  
A colour coded summary screen is available so you can view the status of all pressures/temperatures on your whole fleet.



Simple, clear graphical history of your pressures

Our dedicated Website shows a simple history of the pressures on each vehicle, over time to show trends on 'problem' wheel positions.



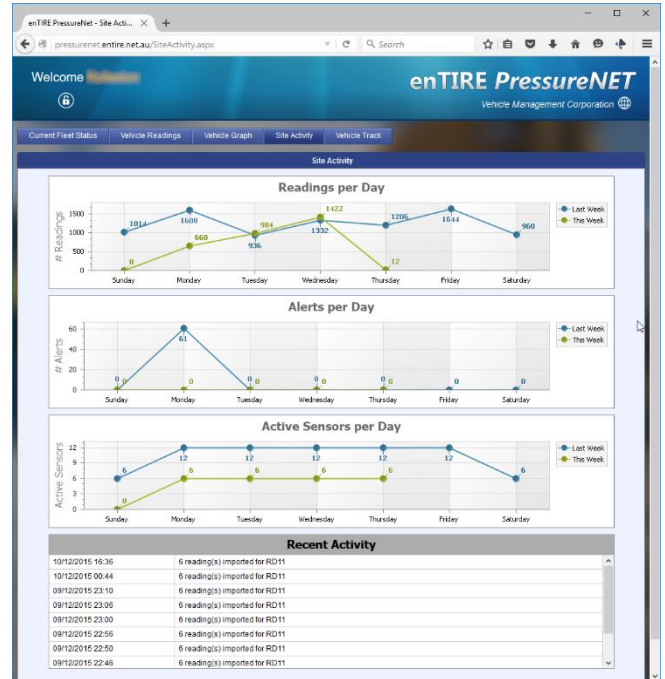
Detailed pressure history of each wheel position

Each vehicle can be selected so a full pressure history of each wheel position can be reviewed.

| Vehicle ID | Reading Date     | Tyre/Sensor ID | Position | Pressure | Low Battery | Fault                       |
|------------|------------------|----------------|----------|----------|-------------|-----------------------------|
| GR4        | 01/08/2015 19:48 | 842662         | 6        | 51 (80)  | No          |                             |
| GR4        | 01/08/2015 19:43 | 842662         | 6        | 51 (80)  | No          |                             |
| GR4        | 01/08/2015 19:38 | 842662         | 6        | 52 (80)  | No          |                             |
| GR4        | 01/08/2015 19:33 | 842662         | 6        | 51 (80)  | No          |                             |
| GR4        | 01/08/2015 19:28 | 842662         | 6        | 51 (80)  | No          |                             |
| GR4        | 01/08/2015 19:23 | 842662         | 6        | 51 (80)  | No          |                             |
| GR4        | 01/08/2015 19:18 | 842662         | 6        | 51 (80)  | No          |                             |
| GR4        | 01/08/2015 19:13 | 842662         | 6        | 51 (80)  | No          |                             |
| GR4        | 01/08/2015 19:08 | 842662         | 6        | 51 (80)  | No          |                             |
| GR4        | 01/08/2015 18:58 | 842662         | 6        | 51 (80)  | No          |                             |
| GR4        | 01/08/2015 18:53 | 842662         | 6        | 52 (80)  | No          |                             |
| GR4        | 01/08/2015 18:48 | 842662         | 6        | 52 (80)  | No          |                             |
| GR4        | 01/08/2015 17:32 | 842662         | 6        | 52 (80)  | No          |                             |
| GR4        | 01/08/2015 17:27 | 842662         | 6        | 51 (80)  | No          |                             |
| GR4        | 01/08/2015 17:22 | 842662         | 6        | 52 (80)  | No          |                             |
| GR4        | 01/08/2015 17:17 | 842662         | 6        | 52 (80)  | No          |                             |
| GR4        | 01/08/2015 17:12 | 842662         | 6        | 52 (80)  | No          |                             |
| GR4        | 01/08/2015 12:31 | 842662         | 6        | 51 (80)  | No          |                             |
| GR4        | 01/08/2015 12:25 | 842662         | 6        | 50 (80)  | No          | =10 PSI Under (Recommended) |
| GR4        | 01/08/2015 12:20 | 842662         | 6        | 51 (80)  | No          |                             |

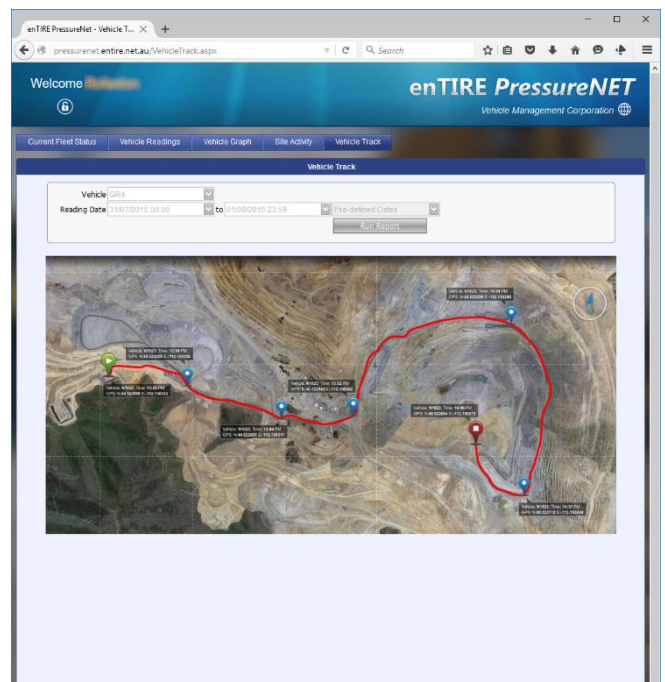
Sensor and reading status

A detailed status of the full TPMS system is available to view the "health" of your operational system. Missing sensors, number of alerts, low batteries and reading per day are displayed.



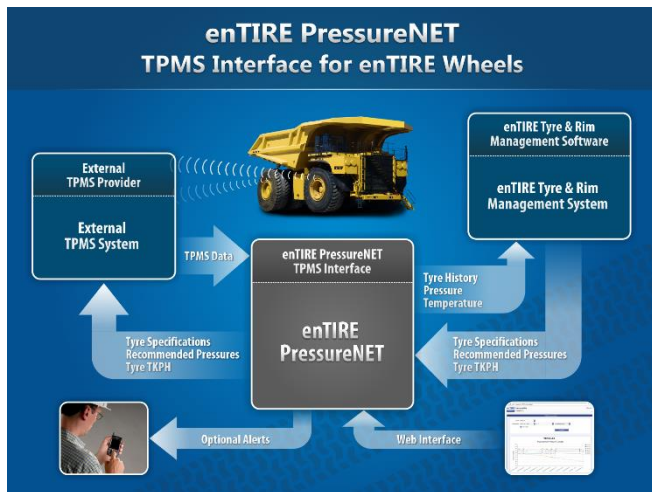
GPS tracking

GPS Tracking is an available option, giving the ability to track vehicle locations and correlate pressure and information with location.



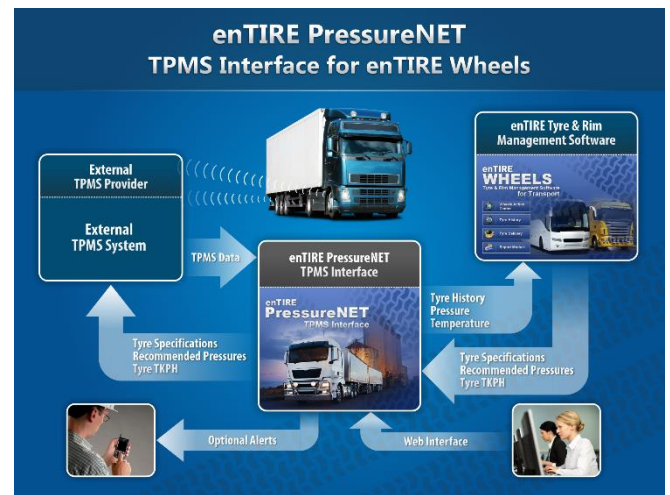
## enTIRE PressureNET for mining interface schematic

This schematic shows data flow from the TPMS sensors, to **enTIRE PressureNET** and finally into an individual tyre history in our tyre and rim management solution, **enTIRE Wheels** for mining.



## enTIRE PressureNET for transport interface schematic

This schematic shows data flow from the TPMS sensors, to **enTIRE PressureNET** and finally into an individual tyre history in our tyre and rim management solution, **enTIRE Wheels** for transport/buses/ports.



## FURTHER INFORMATION

Further information can be obtained from Vehicle Management Corporation or an authorised consultant in your region.

### Our Contact Details are:

Vehicle Management Corporation Pty Ltd  
Suite 25, 375 Hay Street,  
Subiaco, Western Australia 6008  
AUSTRALIA

**Mark Fernie**  
*Managing Director*

|   |                    |
|---|--------------------|
|  | +61 8 9381 2440    |
|  | +61 8 9381 2615    |
|  | mark@entire.net.au |
|  | www.entire.net.au  |

## Head Office

